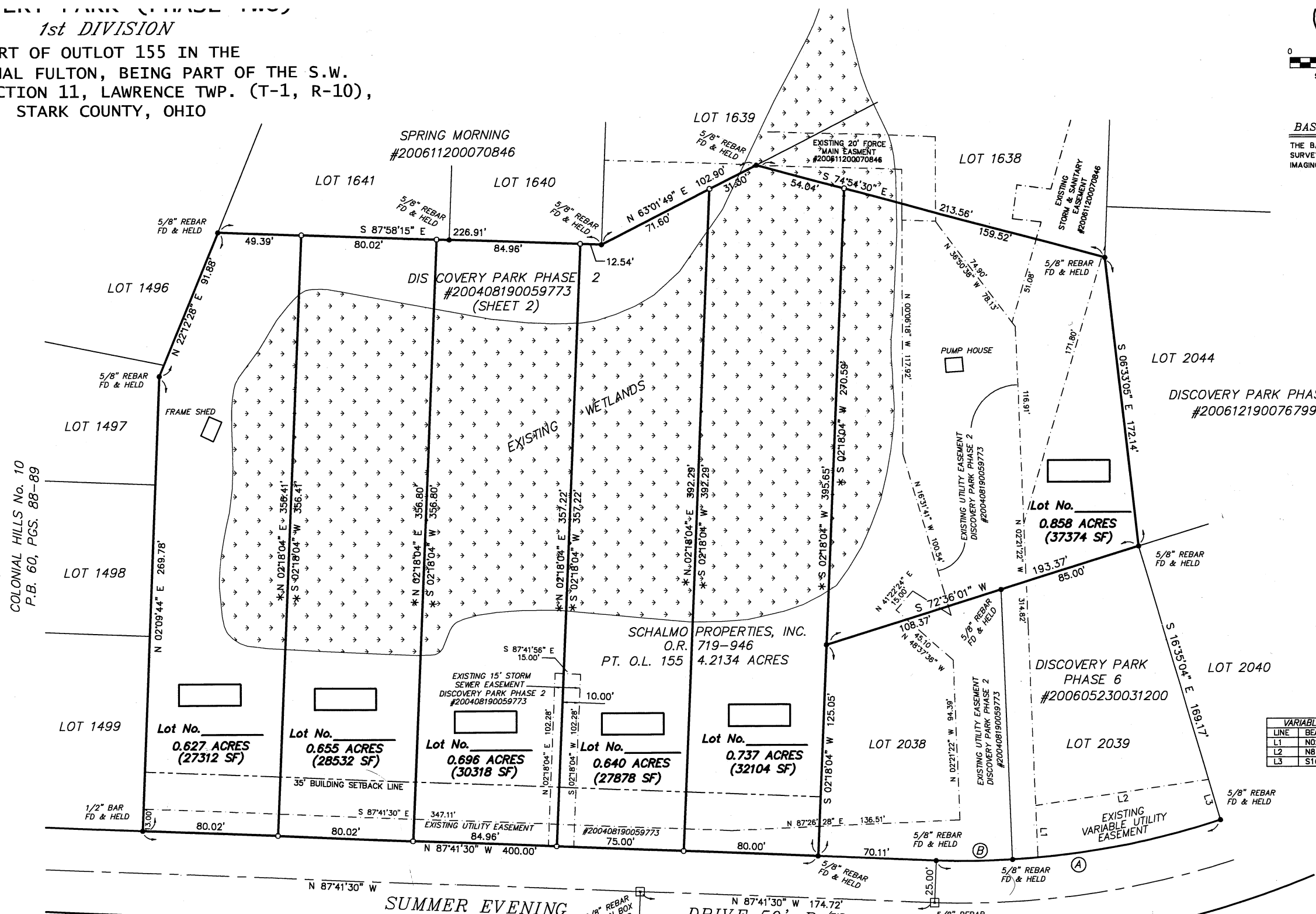


DISCOVERY PARK (PHASE TWO)  
 1st DIVISION  
 PART OF OUTLOT 155 IN THE  
 CITY OF CANAL FULTON, BEING PART OF THE S.W.  
 QUARTER OF SECTION 11, LAWRENCE TWP. (T-1, R-10),  
 STARK COUNTY, OHIO



**BASIS OF BEARINGS**  
 THE BASIS OF BEARINGS FOR THIS  
 SURVEY IS N87°41'30" W, FROM  
 IMAGING NO 200408190059773



COLONIAL HILLS No. 10  
 P.B. 60, PGS. 88-89

VARIABLE UTILITY EASEMENT		
LINE	BEARING	DISTANCE
L1	N02°21'22"W	30.78'
L2	N81°30'18"E	103.13'
L3	S16°35'04"E	24.91'

Ⓐ  
 L=170.32'  
 R=475.00'  
 Δ=20°32'40"  
 C LEN=169.41'  
 BRG=S 82°02'10" W  
 T=86.08'

Ⓑ  
 L=44.96'  
 R=475.00'  
 Δ=05°25'22"  
 C LEN=44.94'  
 BRG=S 89°35'49" W  
 T=22.50'

**LEGEND**

- REC. - RECORD DISTANCE OR ANGLE
- OBS. - OBSERVED DISTANCE OR ANGLE
- - MONUMENT FOUND, SIZE & TYPE AS INDICATED.
- - 5/8" REBAR, 30 INCHES IN LENGTH, WITH CAMPBELL & ASSOC. INC. CAP SET
- ( ) - SQUARE FOOTAGE IN LOT OR OUTLOT
- - 5/8" BAR IN MONUMENT BOX
- \* - NEW DIVISION LINE
- XXXX - HOUSE NUMBER

REVISIONS

NO.	DATE	DESCRIPTION
1	November 2010	Drawn By: DG Checked By: JY Field Book: BD Scale: 1"=30'

**DISCOVERY PARK PHASE 2 - 1ST DIVISION**  
 SCHALMO PROPERTIES, INC.  
 CANAL FULTON, OHIO

**CA**  
 CAMPBELL &  
 ASSOCIATES, INC.  
 Surveying - Engineering  
 1823 Bailey Road Suite A  
 Columbus Falls, Ohio 44221  
 (330) 945-4117  
 www.campbellsurvey.com

JOB NO.  
**20101291**  
 SHEET 2 OF 2

DEVELOPER/OWNER:  
 SCHALMO PROPERTIES, INC  
 PO BOX 192  
 CANAL FULTON, OH 44614  
 PH. (330)-854-9396